

The image features a dark green background with several fabric samples. In the top center, the word 'ROHI' is enclosed in a white square. Below this, there are four distinct fabric textures: a light-colored patterned fabric on the left, a large herringbone patterned fabric in the foreground, a roll of light-colored textured fabric in the center, and a dark-colored patterned fabric on the right. A small portion of a dark teal herringbone fabric is visible in the bottom right corner.

ROHI

UNO + SONO



WENN KRAFTVOLLE FARBEN SICH VERBINDEN UND INSPIRIEREN

Die rohi Kombi Kollektion UNO + SONO steht für inspirierende Farbwelten und raffinierte Kompositionen. Ein lebendiges wie harmonisches Zusammenspiel aus zwei verschiedenen Strukturen. UNO überzeugt mit klaren und kräftigen Farben als Fundament der Verbindung, SONO setzt mit mutigem Design bewusst auf Grafik. Die eigens entwickelten Risographie-Motive visualisieren die Farbwelten der Stoffkollektion in ihrer Lebendigkeit und Tiefe.

WHEN STRONG COLOURS COMBINE AND INSPIRE

The rohi Mix & Match collection UNO + SONO provides inspiring colour schemes and exquisite compositions, with a vibrant and harmonious interplay of two different textures. UNO impresses with its clear and strong colours as the basis for the combination, while SONO focuses on graphics with a bold design. Specially developed risograph motifs portray the vibrancy and depth of the colour schemes in the fabric collection.

UNO + SONO



UNO pumpkin



UNO vivid



SONO flame



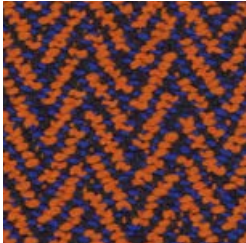
UNO coral



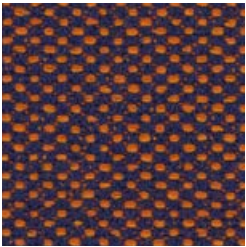
SONO sunset



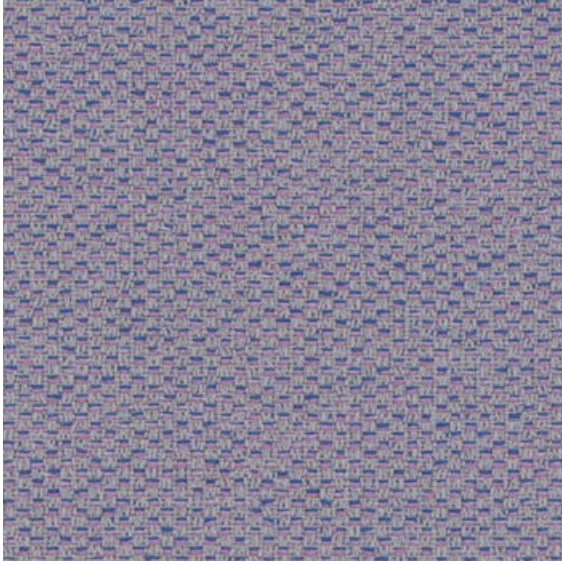
UNO sunset



SONO passion



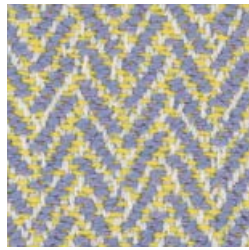
UNO passion



UNO poesie



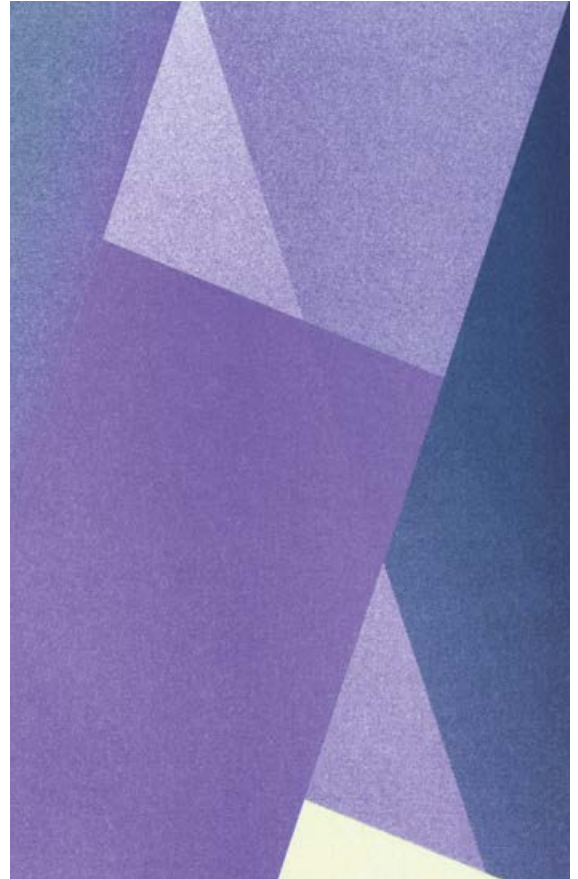
SONO lake



SONO poesie



UNO citrine



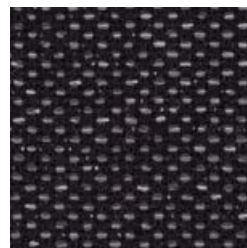
UNO salt



SONO pepper



UNO cobalt



UNO pepper



SONO prime



UNO lake



UNO angora



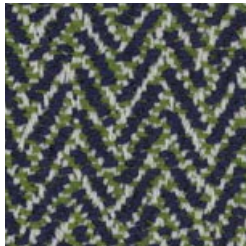
SONO flanel



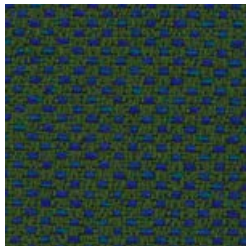
SONO magnolia



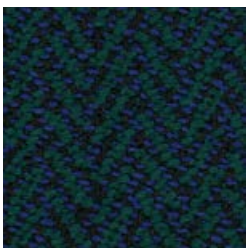
UNO avocado



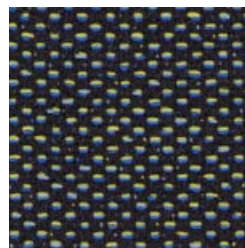
SONO seagrass



UNO forest



SONO samoa



UNO seagrass



DESCRIPTION OF FABRICS

Design: UNO
Content: 95% virgin wool 5% polyamide
Weight approx.: 420 g/m² - 590 g/lm
Width approx.: 140 cm

QUALITY DETAILS

Abrasion: 60.000 rubs ISO 12947-2
Light transmission: DIN EN 410
Lightfastness: ≥ 5 ISO 105-B02 (yarn dyed)
Pilling: ≥ 4-5 ISO 12945-2

virgin wool – worsted yarn quality
easy care, breathable and stain-resistant
durable, hard-wearing
yarn dyed for brilliant colours and
good lightfastness
don't expose to direct sunlight
production and design 'Made in Germany' since 1933

FLAME RESISTANCE

wool is naturally flame retardant
rohi wool fabrics satisfy the following fire norms
with no additional flame retardant treatment:
CAL TB 117 - 2013
EN 1021-1/ -2
BS 5852 part 1: 1979
UNI 9175 1IM
ÖNORM B1/Q1
IMO 2014/90/EU Marine Equipment Directive (MED)

with additional flame retardant treatment:
BS 5852: 2006 Crib5
DIN 4102-1 B2
EN 13501-1 E
FAR 25.853 12 sec. vertical

ACOUSTIC

Flow resistivity: $R_s = 855$ Pa s/m ISO 9053-1
Sound absorption folded: $\alpha_w = 0.85$ / B ISO 11654

ECOLOGY

natural, renewable raw material
IWTO Guidelines for Wool Sheep Welfare
RAL DE-UZ 117 Att. 3b for "Blue Angel"
without flame retardant
AB 2998 (US export standard)
REACH (EU export standard)

MORE FEATURES

special finish: anti-shrink, anti-pilling
dimout option on request
development of individual fabrics for
architects' and designers' concepts
special colours from 25 lm

DESCRIPTION OF FABRICS

Design: SONO
Content: 95% virgin wool 5% polyamide
Weight approx.: 660 g/m² - 920 g/lm
Width approx.: 140 cm

QUALITY DETAILS

Abrasion: 50.000 rubs ISO 12947-2
Light transmission: DIN EN 410
Lightfastness: ≥ 5 ISO 105-B02 (yarn dyed)
Pilling: ≥ 4-5 ISO 12945-2

virgin wool – worsted yarn quality
easy care, breathable and stain-resistant
durable, hard-wearing
yarn dyed for brilliant colours and
good lightfastness
don't expose to direct sunlight
production and design 'Made in Germany' since 1933

FLAME RESISTANCE

wool is naturally flame retardant
rohi wool fabrics satisfy the following fire norms
with no additional flame retardant treatment:
CAL TB 117 - 2013
EN 1021-1/ -2
BS 5852 part 1: 1979
UNI 9175 1IM
IMO 2014/90/EU Marine Equipment Directive (MED)

with additional flame retardant treatment:
BS 5852: 2006 Crib5
DIN 4102-1 B2
EN 13501-1 E
FAR 25.853 12 sec. vertical
BKZ: 5.3 SN 198898

ACOUSTIC

Flow resistivity: $R_s = 899$ Pa s/m ISO 9053-1
Sound absorption folded: $\alpha_w = 0.90$ / A ISO 11654

ECOLOGY

natural, renewable raw material
IWTO Guidelines for Wool Sheep Welfare
RAL DE-UZ 117 Att. 3b for "Blue Angel"
without flame retardant
AB 2998 (US export standard)
REACH (EU export standard)

MORE FEATURES

special finish: anti-shrink, anti-pilling
dimout option on request
development of individual fabrics for
architects' and designers' concepts
special colours from 25 lm

